

# Reasons to Ride Simcoe County

## Location

Ride Simcoe County is just one hour north of the GTA

## Planning

Three themed touring routes are available to ride

## Rider Approved

All accommodations, restaurants and attractions have been approved by riders for riders

## Scenic Lookouts

Lots of great stops including the Niagara Escarpment to snap that epic photo

## Saddlebag Samples

Meet the makers and collect samples from craft breweries, wineries and cideries on our Saints & Sinners Loop

## Ride Coast to Coast

Ride along the coasts of Georgian Bay and Lake Simcoe

## The Food

Load up on sweet treats throughout Simcoe County



## Rider-Approved Businesses

Did you know that every Ride Simcoe County accommodation, food and drink provider, and attraction have gone through a certification process to be designated motorcycle friendly? Keep your eye out for our rider approved sticker at all stops which have been selected for riders by riders.



## Motorcycle Parking Signs

Keep your eye out for our Motorcycle Parking Only signs located at many of motorcycle friendly businesses.



## Repair Shops

- Barrie Harley-Davidson
- J&R Cycle

## Top 10 Stops

1. World Famous Dock Lunch, Penatanguishene
2. Barrie Harley-Davidson, Barrie
3. Quayle's Brewery, Coldwater
4. Casino Rama, Orillia
5. Creemore Bakery, Creemore
6. Nicholyn Farms, Phelpston
7. Em's Café, Coldwater
8. Grandma's Beach Treats, Wasaga Beach
9. Creemore Springs Brewery, Creemore
10. Collingwood Brewery, Collingwood



## What is the Saints & Sinners Trail?

We are excited to introduce to you the two-day Saints & Sinners motorcycle tour. You may have guessed from the name, that this 250km route takes you to craft breweries, wineries, cideries, as well as amazing food stops.

Once a location for bootleggers during prohibition, this region has now become a thriving area for drink producers. You can find craft breweries, VQA wineries and heritage cideries within Simcoe County, many of which include local food pairings to try.

The Saints & Sinners route is for those of you who love to ride, but also love finding the great food and drink locations. Please note, that while many of these stops sell alcohol, we do not promote drinking and riding. There's a reason for your saddle bags. Start your trip with them empty, and fill them to the brim with all the goodies you find on your adventure. Bring some ice packs to ensure the samples you purchase stay cool for you to enjoy once your kickstand is down for the day.

Written by Kristin Schaab, BC Hughes

## Be a Respectful Rider

- Some routes take you through residential areas. While it can be fun listening to the 'po-ta-to' of your bike, please check your noise levels and be respectful when you riding through these areas.
- Set an example when you ride.
- Conduct yourself the way you want to see others conduct themselves.
- Think safety first and have an escape route.
- Never drink and drive.
- Signal your intentions.
- Be aware of your surroundings and pay attention.
- Do not depend on other drivers.
- Follow the 3- to 4-second rule.
- Keep your speed down.
- Cut out distractions.



## Safety

- Certain county roads are busier than others. Please be alert at all times.
- Road surfaces may vary from asphalt to packed tar and chip. Seasonal conditions such as road work may also exist and have an affect on surfaces.
- It is your responsibility to ride according to speed limits, traffic, weather, and your ability.
- Wear all your required gear, including a helmet, eye protection, and body armor.
- When stopped on the side of the road, please ensure you are safely on the shoulder and are visible to other road users.
- Ride sober. Drugs and alcohol severely impair judgement and reaction time leading to serious injury and death. There's never a good excuse to operate any motorized vehicle while impaired.
- Take extra care while riding at night. Darkness makes it more difficult for you to be seen and for you to anticipate dangers.
- Wild animals are unpredictable. Keep speeds low in areas where wildlife is common.
- Before you ride, make a plan that includes where you are going and when you expect to return then make sure your family and friends are aware of your plan in case they need to come looking for you.
- Bring your mobile phone.
- Ride with a buddy: In the event of a crash or breakdown having someone with you to provide assistance could make the difference between life and death.
- Taking a course can help build skills and confidence.
- Novice riders should only ride size appropriate motorcycles.



experience MOTORCYCLING IN SIMCOE COUNTY



experience.simcoe.ca



## DISCLAIMER

The following map has been printed by Tourism Simcoe County. While every effort has been made to ensure the accuracy of this map, inaccuracies or changes may occur. Tourism Simcoe County or the organizations listed within are not responsible for any variations from the printed information.

This map has been developed to assist in planning motorcycle trips throughout Simcoe County. Users of this map are responsible for their own safety and use these routes and trails at their own risk. Users should consider not only route conditions but also their level of experience, traffic conditions and traffic volume, weather, time of day, and any obstacles, such as construction when riding on any route within Simcoe County. Motorcyclists should exercise the same level of caution whether riding on a route designated by this map or any non-designated route.

Tourism Simcoe County and others involved in the design and publication of this map and the motorcycle routes are not responsible for any loss or damage users may suffer as a result of using this map or the routes. Tourism Simcoe County and their partners do not warrant the safety of any route, highway, road, street, trail or designated route shown on this map.

**Waiver:** Having read the foregoing material and as a condition of using this map, the users of this map waive, release, and discharge, for themselves and their heirs, executors, administrators, successors and assigns, any rights or claims which the users have or may hereafter have against the directors, officers, employees, owners, volunteers and staff of Tourism Simcoe County and other sponsoring businesses and organizations, for any and all damages which may be sustained by the users directly or indirectly in connection with their use of this map or the routes.

Photography courtesy of Nat' Caron Photography





# Motorcycle-friendly Businesses

Type and Location

- Accommodations (29)
- Attractions / Food & Drink (3)
- Food & Drink (15)
- Repair Shops (2)
- Attractions (9)
- Breweries/Wineries/Cideries (8)
- Information Centre (6)

1 Angus Inn Motel	168 Mill St, Angus, ON L0M 1B2
2 Awenda Provincial Park	670 Awenda Park Rd, Tiny, ON L9M 0B9
3 Bain Beach	
4 Barrie Harley-Davidson	311 Bryne Dr, Barrie, ON L4N 8V4
5 Barrie K&A Holiday	3138 Penetanguishene Rd, Barrie, ON L9X 1Z7
6 Bayview Wildwood Resort	1500 Port Stanton Pkwy, Severn Bridge, ON P0E 1N0
7 Bell Falls Family Campground	1927 Rosemount Rd, Waubaushene, ON L0K 2C0
8 Best Western Plus Mariposa Inn & Conference Centre	400 Memorial Ave, Orillia, ON L3V 0T7
9 Boathouse Eatery	177 King St, Midland, ON L4R 3L9
10 Casino Rama Resort	5899 Rama Rd, Orillia, ON L3V 6H6
11 Chez Michel Restaurant	150 Mill St, Creemore, ON L0M 1G0
12 Clearview Tourism & Heritage Information Centre	220 Huron St, Stayner, ON L0M 1S0
13 Coldwater Canadiana Heritage Museum	1474 Woodrow Road, Coldwater, ON L0K 1E0
14 Comfort Inn Midland	980 King St, Midland, ON L4R 4K3
15 Comfort Inn Orillia	75 Progress Dr, Orillia, ON L3V 6H1
16 Couchiching Craft Brewing Co	162 Mississaga St E, Orillia, ON L3V 1V9
17 Craigleith Manor Bed & Breakfast	9 Craigleith Ct, Collingwood, ON L9Y 4W5
18 Creemore Bakery	148 Mill St, Creemore, ON L0M 1G0
19 Creemore Pizza Co.	5 Francis St E Unit 8, Creemore, ON L0M 1G0
20 Creemore Springs Brewery	139 Mill St, Creemore, ON L0M 1G0
21 Days Inn Orillia	5850 Rama Rd, Ramara, ON L3V 0S3
22 Dornoch Tap and Grill	4203 Simcoe County Rd 124, Nottawa, ON L0M 1P0
23 Downtown Midland Murals	
24 Dragonfly Dreams Inn - Bed and Breakfast	670 Hugel Ave, Midland, ON L4R 1W9
25 Duntroon Highlands Resort Ltd	1226 Concession 10 N Nottawasaga Rd, Duntroon, ON L0M 1H0
26 Earl Rowe Provincial Park	4998 Concession Rd 7, Alliston, ON L9R 1W1
27 Em's Cafe	16 Coldwater Rd, Coldwater, ON L0K 1E0
28 Espresso Post	139 Hurontario St, Collingwood, ON L9Y 2L9
29 Feeb's Pub & Grill	2 Mill St E, Tottenham, ON L0G 1W0
30 Fern Resort	4432 Fern Resort Rd, Ramara, ON L3V 0Z1
31 Flying Monkeys Craft Brewery	107 Dunlop St E, Barrie, ON L4M 1A6
32 Flying Squirrels Motorcycle Co.	2 Francis St E, Creemore, ON L0M 1G0
33 Flynn's Irish Pub	96 Main St, Penetanguishene, ON L9M 1T5
34 Gables Bed and Breakfast	207 Point St, Stayner, ON L0M 1S0
35 Gateway Casino Innstill	7485 5th Side Rd, Innisfil, ON L9S 3S1
36 Georgian Bay Hotel, Trademark Collection by Wyndham	10 Vacation Inn Dr, Collingwood, ON L9Y 5G4
37 Georgian Residence and Conference Centre	101 Georgian Dr, Barrie, ON L4M 3X9
38 Grandma's Beach Treats	1014 Mosley St, Wasaga Beach, ON L9Z 2G7
39 Grounded Coffee Company	538 Bay St, Midland, ON L4R 1L3
40 Heritage Estate Winery and Cider	421 Penetanguishene Rd, Barrie, ON L4M 0H1
41 Horseshoe Resort	1101 Horseshoe Valley Rd W, Barrie, ON L4M 4Y8
42 J&R Cycle	8166 RRR#2, ON-26, Stayner, ON L0M 1S0
43 Jackson Beach Park	1 Marina Rd, Tiny, ON L0L 2J0
44 Kings Inn	751 King St, Midland, ON L4R 0B7
45 Lakehead University	500 University Ave, Orillia, ON L3V 0B9
46 Martyr's Shrine	16163 ON-12, Midland, ON L4R 4K6
47 Midland Inn & Suites	720 Prospect Blvd, Midland, ON L4R 4K3
48 Midland Visitor Information Centre	527 Len Soff Blvd, Midland, ON L4R 5N6
49 Nicholyn Farms	3088 Horseshoe Valley Rd W, Phelpsston, ON L0L 2K0
50 Noe's Nest Country Bed and Breakfast / Special Events Space	2770 Triple Bay Rd, Port McNeill, ON L0K 1R0
51 Northwinds Brewhouse	499 First St, Collingwood, ON L9Y 1B9
52 Nottawasaga Inn Resort & Conference Centre	6015 ON-89, Alliston, ON L9R 1A4
53 Ontario Travel Information Centre - Barrie	21 Mapleview Dr E, Barrie, ON L4N 9A9
54 Penetanguishene Tourist Information Centre	2 Main St, Penetanguishene, ON L9M 1S6
55 Pretty River Valley Country Inn	529742 Osprey-The Blue Mountains Trlne, Nottawa, ON L0M 1P0
56 Quality Inn & Conference Centre	924 King St, Midland, ON L4R 0B8
57 Quayle's Brewery	4567 12 Line N, Coldwater, ON L0K 1E0
58 Rawley Resort, Spa & Marina	2900 Kellys Rd, Port Severn, ON L0K 1S0
59 Side Launch Brewing Company Inc.	200 Mountain Rd Unit 1, Collingwood, ON L9Y 4V5
60 Simcoe County Museum	1151 ON-26, Minessing, ON, L0L 1Y2
61 South Georgian Bay Tourism	45 St Paul St, Collingwood, ON L9Y 3P1
62 Status - Kitchikewana	19 Main St, Penetanguishene, ON L0M 1S6
63 The (Fuda) Italian Bakery	200 Wellington St W, Barrie, ON L4N 1K9
64 The Captain's House B & B	423 Hugel Ave, Midland, ON L4R 1V2
65 The Champlain Waterfront Hotel, an Ascend Hotel Collection	2 Front St N, Orillia, ON L3V 4R5
66 The Collingwood Brewery	10 Sandford Fleming Dr, Collingwood, ON L9Y 4V7
67 The Queen's Quay British Pub And Restaurant	67 Juneau Rd, Victoria Harbour, ON L0K 2A0
68 The VanderMarck Boutique Hotel	64 Third St, Collingwood, ON L9Y 1K5
69 Tucked Inn the Harbour B&B	197 Robins Point Rd, Victoria Harbour, ON L0K 2A0
70 Wasaga Beach Area 1	1 Jenetta St, Wasaga Beach, ON L9Z 2V9
71 Wasaga Beach Chamber of Commerce	2115 Mosley St, Wasaga Beach, ON L9Z 1A4
72 World Famous Dock Lunch	4 Main St, Penetanguishene, ON L9M 1T1

## Route Descriptions

### The Big Chute Loop

This two-day ride takes you through Simcoe County's diverse landscape, including the grand vistas from the Niagara Escarpment, the shores of Georgian Bay and Lake Simcoe, rolling farmland and the memorable Upper Big Chute Road. While this ride can technically be completed in two days, we suggest adding a day to your trip so you can take your time cruising through quaint towns, enjoying delicious food and great patios, and discovering unique historic attractions along the way.

**Length:** 400 kms

**Duration:** Two days

**Highlights:** Niagara Escarpment, Upper Big Chute Road, Georgian Bay.

### The Chute Loop

Named after the popular Upper Big Chute Road, this super scenic ride takes you through the northeastern portion of Simcoe County along winding roads and into old port towns including Midland and Penetanguishene. It's a historic route featuring the 101-year-old Trent Severn Waterway, Martyr's Shrine and several heritage towns. Grab some baked goods and great coffee along the way. This day ride is perfect for those who need a little helmet time and a break from the daily grind.

**Length:** 250 kms

**Duration:** One day

**Highlights:** Upper Big Chute Road, Georgian Bay, Coldwater, Midland, Martyr's Shrine.

### Saints & Sinners Loop

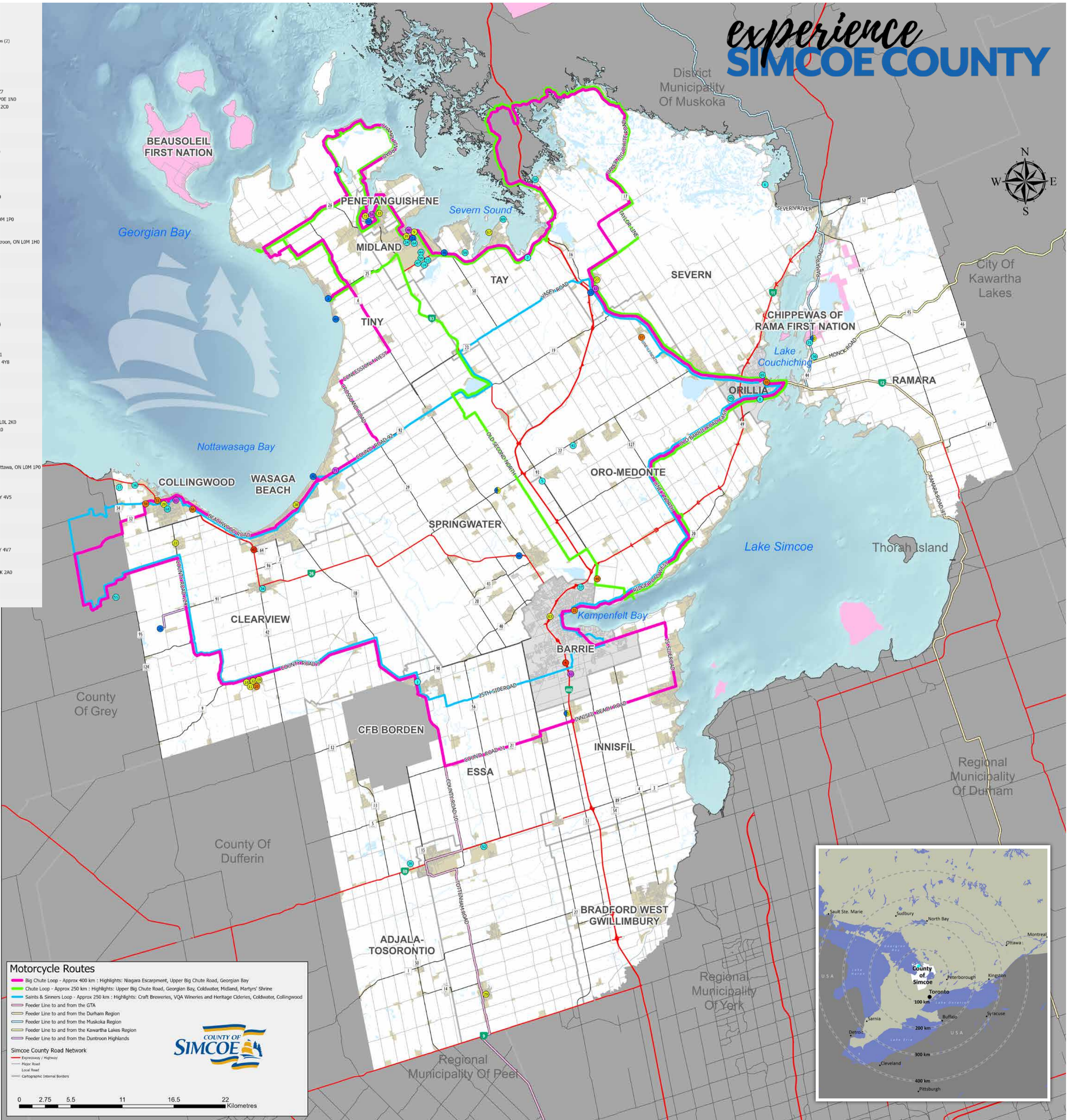
If your goal when riding is to find the best food and drink spots, then the Saints & Sinners Loop is your ride. During prohibition, this area was a location for bootleggers; now you can find craft breweries, VQA wineries and heritage cideries. As you ride your way through the middle of Simcoe County, along the Niagara Escarpment and through the quaint countryside, make sure you have lots of room in your saddle bag because it will be full once you finish this loop.

**Length:** 250 kms

**Duration:** Two days

**Highlights:** Craft Breweries, VQA Wineries and Heritage Cideries, Coldwater, Collingwood.

*\*Please note that while many of the Saints & Sinners stops sell alcohol, we do not promote drinking and riding. There's a reason for your saddle bag. Enjoy your samples once your kickstand is down for the day.*



### Motorcycle Routes

- Big Chute Loop - Approx 400 km : Highlights: Niagara Escarpment, Upper Big Chute Road, Georgian Bay
- Chute Loop - Approx 250 km : Highlights: Upper Big Chute Road, Georgian Bay, Coldwater, Midland, Martyr's Shrine
- Saints & Sinners Loop - Approx 250 km : Highlights: Craft Breweries, VQA Wineries and Heritage Cideries, Coldwater, Collingwood
- Feeder Line to and from the GTA
- Feeder Line to and from the Durham Region
- Feeder Line to and from the Muskoka Region
- Feeder Line to and from the Kawartha Lakes Region
- Feeder Line to and from the Duntroon Highlands

**Simcoe County Road Network**

- Expressway / Highway
- Major Road
- Local Road
- Cartographic Internal Borders

