



experience
PADDLING
IN SIMCOE COUNTY

experience.simcoe.ca

GUIDES AND RENTALS

If you are new to the Nottawasaga River, Minesing Wetlands or Georgian Bay, we recommend hiring a guide.

Paddling Guides and Rentals:

- **Free Spirit Tours**
705-606-0867 | freespiritstours.ca
- **Eagle Adventures**
705-888-2551 | eaglemaxadventures.com
- **Blue Wave Board Co.**
1866-404-3155 | bluwave.ca
- **Adventure Georgian Bay**
705-539-0094 | adventuregeorgianbay.com

Nottawasaga River Fishing Guides:

- **A Perfect Drift**
416-708-0454 | aperfectdrift.com
- **Wood Angling**
647-857-7085 | woodangling.com
- **Smooth River Guiding Co.**
www.smoothriver.ca

Disclaimer:

While every effort has been made to ensure the accuracy of this map, inaccuracies or changes may occur. The participating organizations (Nottawasaga Valley Conservation Authority (NVCA), County of Simcoe, Regional Tourism Organization 7 (RTO7), Town of Wasaga Beach, Township of Springwater, Essa Township or the Province of Ontario) are not responsible for any variations from the printed information. This paddling map has been developed to assist in planning paddling trips along the Nottawasaga River and Wasaga Beach waterfront. Users of this paddling guide are responsible for their own safety and use the routes at their own risk. Users should consider water conditions and level of experience and comfort of paddling with motorized boats, weather conditions, time of day, and obstacles, including debris and other hazards. Paddlers should exercise the same level of caution whether paddling on a route designated in this guide or any non-designated routes. This is not intended as a guide for children. The participating organizations and others involved in the design and publication of this guide and the routes are not responsible for any loss or damage users suffer as a result of using this paddling guide. These same organizations and their partners do not warrant the safety of routes, waterways, access points of launches shown on the paddling maps.

Waiver:

Having read this foregoing material and as a condition of using this paddling guide map, the users of this paddling guide map waive, release, and discharge, for themselves, and their heirs, executors, administrators, successors, and assigns, any right or claims which the users have or may hereafter have against the directors, officers, employees, owners, volunteers, and the staff of the County of Simcoe, NVCA, RTO7, the Province of Ontario, Town of Wasaga Beach, Township of Springwater, Essa Township, and other sponsoring businesses of the participating organizations for any and all damages which may be sustained by the users directly or indirectly in connection with their use of this paddling guide map or the water routes.





SAFETY IN THE MINESING WETLANDS

Whichever route you take, be prepared. The Minesing Wetlands are an isolated wilderness area and appropriate cautions need to be made to ensure a safe trip. The route changes depending on the season and has no clear river channel in the spring. When possible, remember to stay within the river channel while exploring the Minesing Wetlands, especially when the area is experiencing high water levels. Always be sure to carry a good map, compass and GPS; many experienced paddlers have gotten lost as there are no defined channels during high water events. A sturdy canoe or kayak is recommended; inflatable dinghies, stand-up paddle boards, and other recreational craft are not suitable for paddling in Minesing.

Wildlife is abundant in the area, so keep a respectful distance and never feed animals. Cell service may be limited, so plan accordingly. Conditions can change rapidly—calm channels may become open lakes with whitecaps, or low water may make some areas impassable. Hazards such as unmarked routes, log jams, poison ivy, and stinging nettle are common.

Each year, first responders conduct rescues in the wetlands, which are complex, risky, and potentially costly. Paddlers may be financially responsible for their own rescue. Be sure to carry all Transport Canada-required marine safety equipment.

The wetlands are not suitable for beginners, and even experienced paddlers unfamiliar with the area are encouraged to join a guided trip. The Friends of Minesing Wetlands, a volunteer group dedicated to protecting and promoting the area, often offer spring tours. For additional details on their tours, visit minesingwetlands.ca.

GENERAL SAFETY TIPS

- Know how to swim
- Always wear a properly fitted life jacket/PFD
- Learn to recognize the symptoms and treat hypothermia as one of the leading causes of paddling deaths
- Be Prepared - Carry a safety kit: extra paddle, PFD, first aid kit, throw rope, bailer, sound signaling device, waterproof flashlight, good quality map, compass, dry clothes, food, and water
- Tell a responsible person your route and expected return time
- Check the weather and water conditions before heading out
- Be cautious around rapids, strainers, and deadheads (partially submerged logs)
- Enter and exit boats carefully on muddy or steep banks
- Stay close to shore in windy or open water conditions

SAFETY ON GEORGIAN BAY AT WASAGA BEACH

Georgian Bay is a vast body of water and conditions can change quickly. If you seek calmer waters, hugging the shoreline is recommended or paddle further out if you're more experienced and looking for more adventure. Be advised that the winds can change at a moment's notice and the bay can become extremely rough. The wind tends to come from the west, so paddling from Beach Area 1 towards the escarpment and Beach Area 6 may require additional energy. The bay is sandy and shallow, so as a general rule, try to stay within a four-foot depth; if you get tired, you can always walk back in.

OVERVIEW MAP



- | | | | |
|-----------------------|------------------|--------------|-----------------|
| Admission/Parking Fee | Food | Parking | Rough Section |
| Boat Launch | Hiking | Picnic Area | Private Camping |
| Canoeing | Information | Restrooms | Turnaround |
| Dog Park | Kiteboard Launch | Launch Point | |
| Fishing | Outfitters | Swimming | |

ROUTES

- Routes
- Launch Point
- Point of Interest
- Waterway Trail
- Out-and-back
- Point-to-point

TRANSPORTATION

- Highway
- Major Road
- Local Road

WATER FEATURES

- River, Stream or Creek
- Wetland
- Lakes, Ponds and Rivers

LAND TYPE

- Local Park
- Provincial Park
- Provincial Park Regulated Boundary
- Crown Land
- Conservation Area
- Provincial Park

DIFFICULTY

- Easy
- Moderate
- Difficult

ROUTES

- 1** Minesing Wetlands: Willow Creek
- 2** Minesing Wetlands: Edenvale into Minesing
- 3** Nottawasaga River: Edenvale to Wasaga Beach Sports Park
- 4** Nottawasaga River: Jack's Lake
- 5** Nottawasaga River: Wasaga Beach Sports Park to Schooner Town
- 6** Georgian Bay in Wasaga Beach: Wasaga Beach Provincial Park Beach Areas 1 to 3
- 7** Georgian Bay in Wasaga Beach: Wasaga Beach Provincial Park Beach Areas 4 to 6

Come explore Minesing Wetlands—the crown jewel of the Nottawasaga River system. A short drive from the busy city centres of the Greater Toronto Area (GTA), the 6,000-hectare Minesing Wetlands is a wilderness next door. One day's paddle will give you a chance to explore the swamp, marsh, and forest habitats of this internationally significant wetland.

Hundreds of different animals, birds, fish, flowers, and trees make their home in Minesing. Some are rare to Simcoe County and some are rare in the province. As you travel through Minesing, you're likely to spot bald eagles soaring overhead, herons wading through the grasses, turtles basking in the sun, and fish splashing alongside your canoe.

Changing water levels throughout the year make for new experiences for even seasoned Minesing visitors. The high waters of late spring create open lakes in areas that are typically grass-covered and give paddlers a chance to canoe through the forest. The low waters in late summer can be more challenging, as portaging may be needed through logjams and shallow sections.

Although you are within an hour's drive of Canada's largest city, Minesing is a true wilderness—plan your adventure with care.



MINESING WETLANDS

experience
SIMCOE COUNTY

WILLOW CREEK

Distance: 20 km **Time:** 5 hrs

Difficulty: easy to moderate paddling

Route: point-to-point

LAUNCH POINT

1 Minesing Wetlands Conservation Area
44.421722, -79.823885

2 Edenvale Conservation Area
44.453839, -79.90123

PARKING

Minesing Wetlands Conservation Area - Paid Parking
2220 George Johnston Road
Minesing

Edenvale Conservation Area - Paid Parking
3920 Highway 26
Minesing

MINESING WETLANDS CONSERVATION AREA



EDENVALE CONSERVATION AREA



This route along Willow Creek is a favourite with paddlers looking to discover the wonders of the Minesing Wetlands. Putting in at the Willow Creek Canoe Corral on George Johnston Rd., you will wind your way 13.5 km downstream to where the Willow Creek joins the main branch of the Nottawasaga River.

From the confluence, it is a further 6.3 km to the pull-out at Edenvale Conservation Area. This route remains passable for most of the year, but can be quite low in spots during the summer months. Along the way, you will pass through open wetlands, which in the high water levels of the spring flood give the impression of a lake.

If you are a bird watcher you will not be let down with the diversity along this route.

The Minesing Wetlands are an isolated wilderness area and paddlers should be prepared as such. Check the weather conditions before heading out and be aware that water levels along this route vary considerably over the seasons. Follow the safety tips given in the start of this guide and always paddle within your ability.

Caution: Logjams may occur along sections of this route. No official portage has been mapped, signed, or maintained.



EDENVALE INTO MINESING

Distance: Varies **Time:** Varies

Difficulty: easy to moderate paddling, depending on time of year

Route: Out-and-back

LAUNCH POINT

1 Edenvale Conservation Area
44.453839, -79.90123

PARKING

Edenvale Conservation Area -
Paid Parking
3920 Highway 26
Minesing

EDENVALE CONSERVATION AREA



MINESING WETLANDS CONSERVATION AREA



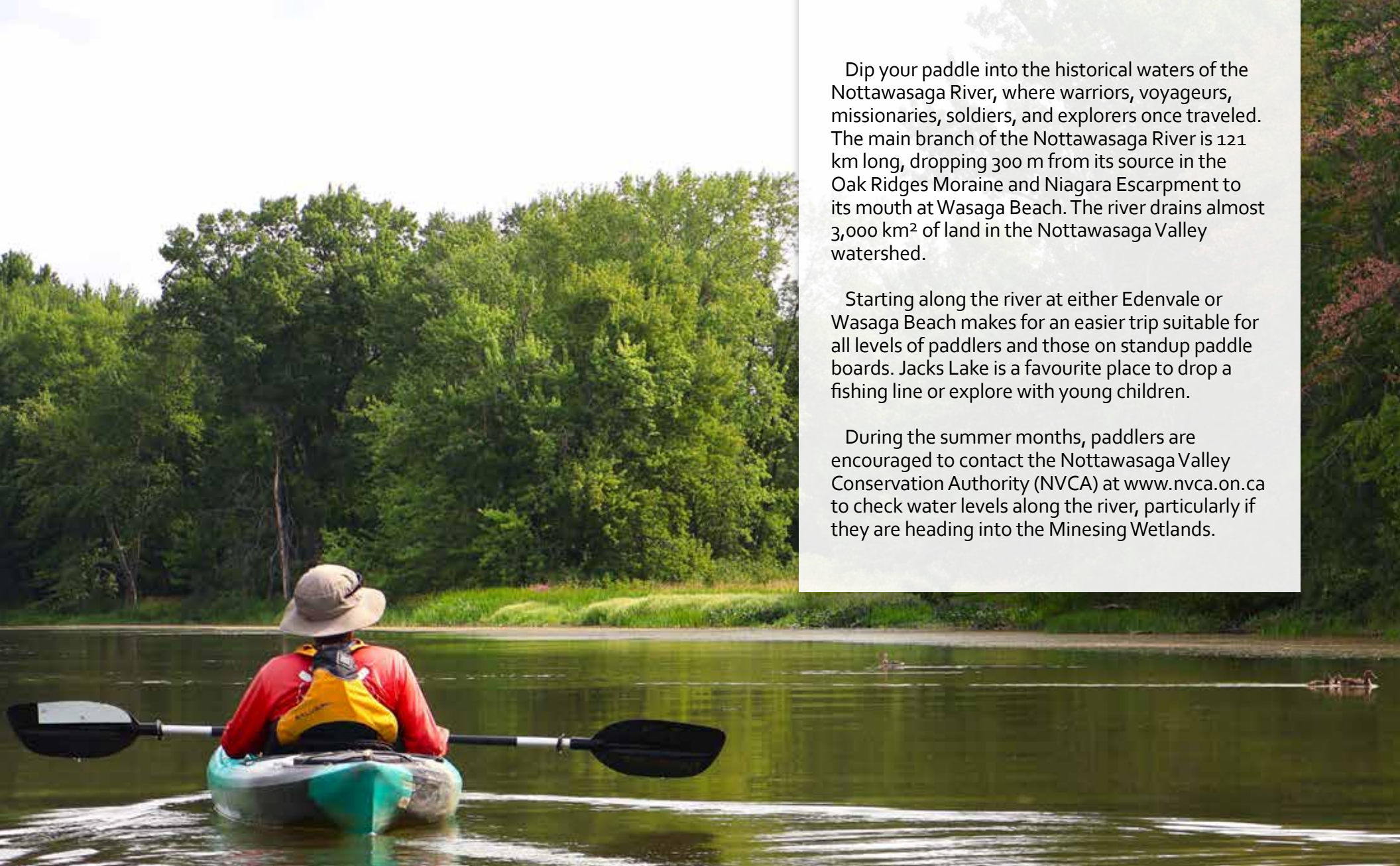
If you are looking to go in and out of the Minesing Wetlands from the same parking location, put-in at Edenvale Conservation Area and travel upstream on the Nottawasaga River (head under Highway 26). In about two hours, you'll reach the confluence with the Mad River and be in the Minesing Wetlands proper, where you can enjoy the naturally, isolated beauty of the wetlands. Head back downstream to return to Edenvale.

As you are able to set the distance you travel, this route is an excellent choice for novice paddlers and families.

The Minesing Wetlands are an isolated wilderness area and paddlers should be prepared as such. Check the weather conditions before heading out and be aware that water levels along this route vary considerably over the seasons. Follow the safety tips given in the start of this guide and always paddle within your ability.

Caution: Logjams may occur along sections of this route. No official portage has been mapped, signed, or maintained.





Dip your paddle into the historical waters of the Nottawasaga River, where warriors, voyageurs, missionaries, soldiers, and explorers once traveled. The main branch of the Nottawasaga River is 121 km long, dropping 300 m from its source in the Oak Ridges Moraine and Niagara Escarpment to its mouth at Wasaga Beach. The river drains almost 3,000 km² of land in the Nottawasaga Valley watershed.

Starting along the river at either Edenvale or Wasaga Beach makes for an easier trip suitable for all levels of paddlers and those on standup paddle boards. Jacks Lake is a favourite place to drop a fishing line or explore with young children.

During the summer months, paddlers are encouraged to contact the Nottawasaga Valley Conservation Authority (NVCA) at www.nvca.on.ca to check water levels along the river, particularly if they are heading into the Minesing Wetlands.

NOTTAWASAGA RIVER

experience
SIMCOE COUNTY

EDENVALE TO WASAGA BEACH SPORTS PARK

Distance: 13.5 km **Time:** 4 hrs

Difficulty: easy paddle

Route: Point-to-point

LAUNCH POINT

1 Edenvale Conservation Area
44.453839, -79.90123

2 Wasaga Beach Sports Park
44.475633, -80.009005

PARKING

Edenvale Conservation Area -
Paid Parking
3920 Highway 26
Minesing

Wasaga Beach Sports Park
Free Parking
1888 Klondike Park Road
Wasaga Beach

EDENVALE CONSERVATION AREA



WASAGA BEACH SPORTS PARK



Beginning at Edenvale Conservation Area, this section of the Nottawasaga River navigates through dense forests, silver maple swamps, and open meadows teeming with wildlife. Before launching your vessel, discover a monument at Glengarry Landing, a National Historic Site, where a flotilla of 29 batteaux was built in a desperate expedition to relieve the British troops at Fort Michilimackinac during the War of 1812.

Downstream of Edenvale, the river cuts through the 25-metre deep gorge of the Edenvale Moraine, made of materials deposited by the retreat of the glaciers, and flows into Jacks Lake, part of an ancient lagoon and a popular local fishing spot.

Passing under the Klondike Park Road Bridge, the Wasaga Beach Sports Park launch is on the right. The Wasaga Beach Sports Park offers numerous amenities, including a waterside picnic shelter, restrooms, a playground, and sports facilities, to name a few.

Check the weather conditions before heading out and be aware that water levels along this route vary considerably over the seasons. Follow the safety tips given in the start of this guide and always paddle within your ability.



JACKS LAKE

Distance: 6.5 km **Time:** 2 hrs

Difficulty: easy paddle

Route: Out-and-back

LAUNCH POINT

1 Wasaga Beach Sports Park
44.475633, -80.009005

P PARKING

Wasaga Beach Sports Park
Free Parking
1888 Klondike Park Road
Wasaga Beach

WASAGA BEACH SPORTS PARK



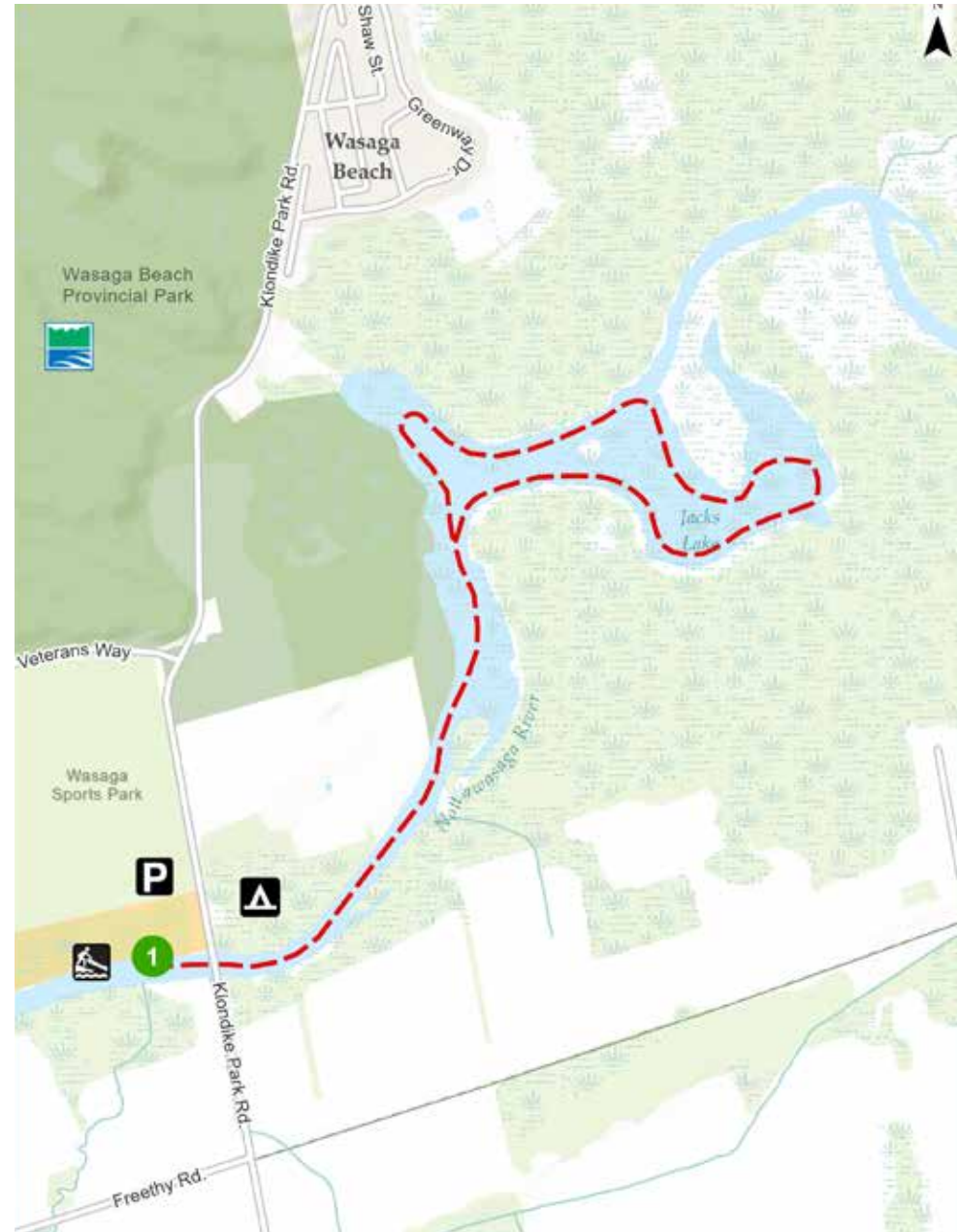
Jacks Lake, part of an ancient lagoon, is a popular open-water fishing spot, rumoured to be “the spot” to land monster fish.

An easy paddle suitable for beginners of all ages, Jacks Lake offers a unique experience during every visit, due to its ever changing water levels. Launch at the Wasaga Beach Sports Park, which offers lots of amenities, including free parking, a waterside picnic shelter, restrooms, and sports facilities and paddle upstream into Jacks Lake. Explore the tree studded edge of the lake, spot beavers, swans, a variety of frogs and turtles.

Drop a line and do a bit of fishing if you like before looping back downstream with the current to the Wasaga Beach Sports Park.

Don't forget to look up to spot bald eagles, as they have been known to nest in the area.

Check the weather conditions before heading out and be aware that water levels along this route vary considerably over the seasons. Follow the safety tips given in the start of this guide and always paddle within your ability.



WASAGA BEACH SPORTS PARK TO SCHOONER TOWN

Distance: 10 km **Time:** 2 hrs

Difficulty: easy paddle; low rapids

Route: Point-to-point

LAUNCH POINT

1 Wasaga Beach Sports Park
44.475633, -80.009005

2 Schooner Town
44.489796, -80.048584

PARKING

Wasaga Beach Sports Park
Free Parking
1888 Klondike Park Road
Wasaga Beach

Schooner Town Parkette
Free Parking
28 Sunset Court
Wasaga Beach

WASAGA BEACH SPORTS PARK



SCHOONER TOWN



OUTFITTERS

Free Spirit Tours
28 Sunset Court
Wasaga Beach
705-606-0867

Home to the largest group of parabolic sand dunes in the entire province, this section of the River meanders along sandy shores, where you can get lost in the beauty of the crest shaped sand sculpted by glaciers and rimmed with dense vegetation.

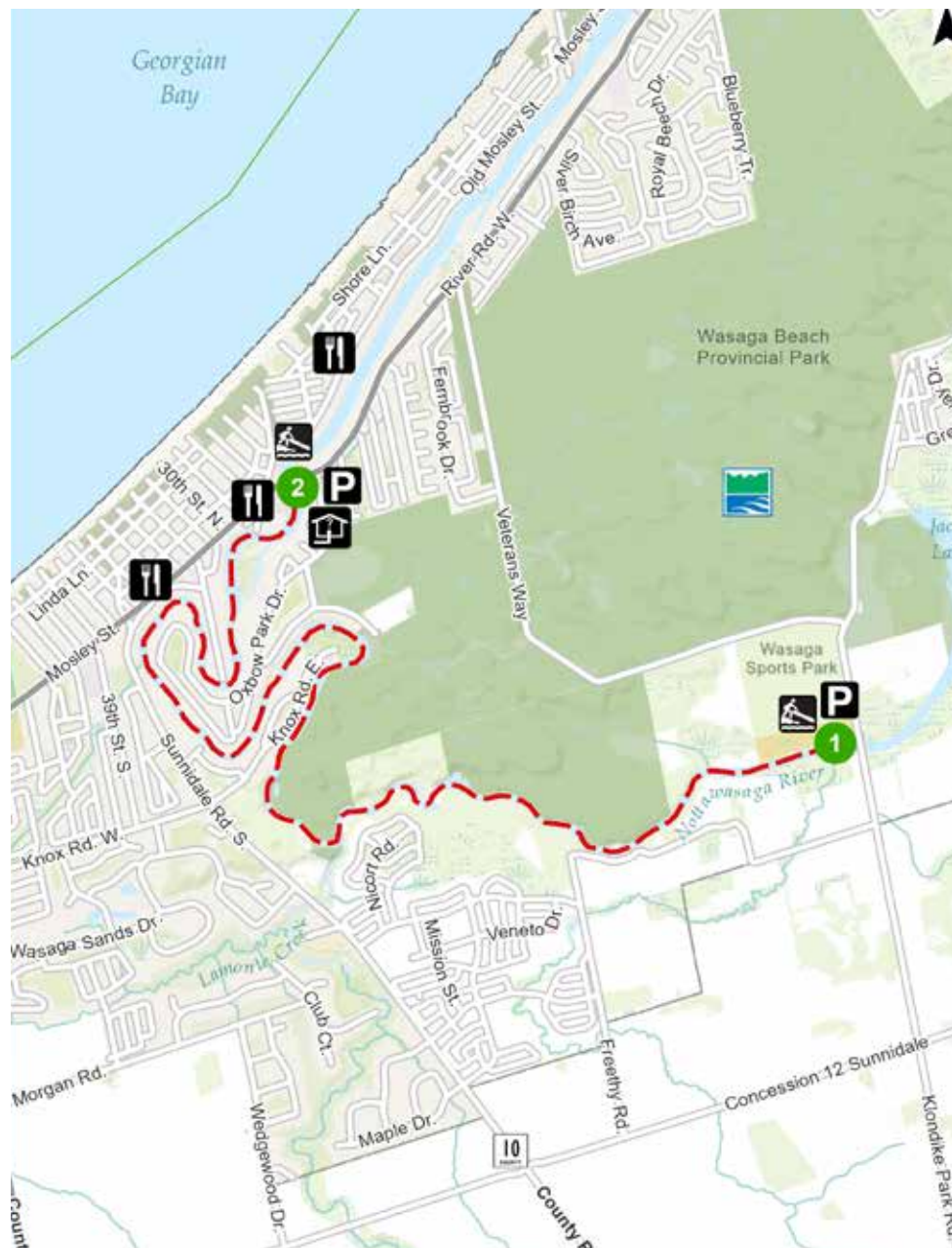
The Wasaga Beach Sports Park offers an ideal launching point due to its many amenities. Just beyond the launch there is a series of rapids that are easy to chute through no matter what your skill level, but add a sense of adventure to the journey.

The river twists and turns through provincial park lands and fragile habitats, offering majestic views of the iconic Oxbow Dune, home to Bank Swallows and their tiny nests. It's important to respect the natural beauty of the dunes and their longstanding residents, many of which are endangered, by leaving them untouched.

Downriver, expect to receive encouraging waves from the cottagers on shore and as you approach Schooner Town, the historical winter quarters of the Royal Navy of 1812.

Exit the river to your right before going under the bridge.

Heavy boat traffic is typical after the bridge, making for difficult paddling conditions.



Check the weather conditions before heading out and be aware that water levels along this route vary considerably over the seasons. Follow the safety tips given in the start of this guide and always paddle within your ability. This route can also experience heavy boat traffic, particularly on weekends.

Wasaga Beach is world famous for its 14 kilometres of white sand beach, warm, clean waters and panoramic mountain views across Georgian Bay.

There are two sections of the Georgian Bay Route to explore as a linear route or loop. You can hug the shoreline if you seek calmer waters or paddle further out if you're more experienced, but note that the winds can change at a moment's notice, and the bay can be extremely rough.

Typically, the wind comes from the west, so paddling from Beach Area 1 towards the escarpment and Beach Area 6 may require extra effort. The bay is sandy and shallow so as a general rule, try to stay within a 4-foot depth and if you get tired, you can always walk back in.



WASAGA BEACH

experience
SIMCOE COUNTY


BEACH AREA 1 TO 3 – THE MAIN END & HISTORY

Distance: 3.1 km **Time:** 1 hr


Difficulty: easy paddle but can vary based on weather


Route: Point-to-point or out-and-back


LAUNCH POINT

 Wasaga Beach Provincial Park
Beach Area 1
44.521614, -80.024159

POINTS OF INTEREST

 Beach Area 1 Gatehouse
Jenetta Street
Wasaga Beach

 Beach Area 2 Gatehouse
31 Francis Street
Wasaga Beach

 Beach Area 3 Gatehouse
11 22nd Street North
Wasaga Beach

PARKING

Spruce Street Lot - Paid Parking
17 Spruce Street
Wasaga Beach

3rd Street Lot - Paid Parking
13 3rd Street
Wasaga Beach

Wasaga Beach Provincial Park -
Paid Parking

OUTFITTERS

Blu Wave Board Co.
818 Mosley Street
Wasaga Beach
1-866-404-3155

Beach Areas 1–3 are the most vibrant parts of Wasaga Beach. Beach Area 1 is the commercial hub, with shops, restaurants, and summer events. It's also a nesting site for the rare piping plover and offers panoramic views from its shallow western waters. Beach Area 2 features picnic areas, washrooms, and a beachfront boardwalk, as well as easy access to Nancy Island Historic Site. As you paddle between Areas 2 and 3, imagine the thrill of the 1934 'Trail of the Caribou', the first overseas flight from Canada, that launched from this beach. Beach Area 3 offers stunning shoreline views of the escarpment and is the only dog-friendly section, with a fenced area for pets. It also connects to the Shore Lane Trail and the Provincial Park Office, making it a great starting point for exploring the town.

Note: all Ontario Parks – Wasaga Beach Provincial Park facilities are operated seasonally.

The wind and weather can dramatically change the ability level of this route. Please check the weather conditions before heading out. Always stay within your paddling ability.



BEACH AREA 1



BEACH AREA 2



BEACH AREA 3



BEACH AREA 4 TO 6 – NATURAL VIEWS

Distance: 3.9 km **Time:** 1.5 hours

Difficulty: easy paddle but can vary based on weather

Route: Point-to-point or out-and-back

POINTS OF INTEREST

- 4** Beach Area 4 Gatehouse
20 24th Street
Wasaga Beach
- 5** Beach Area 5 Gatehouse
768 Shore Line
Wasaga Beach
- 6** Beach Area 6 Gatehouse
2 50th Street North
Wasaga Beach

BEACH AREA 4



BEACH AREA 5



BEACH AREA 6



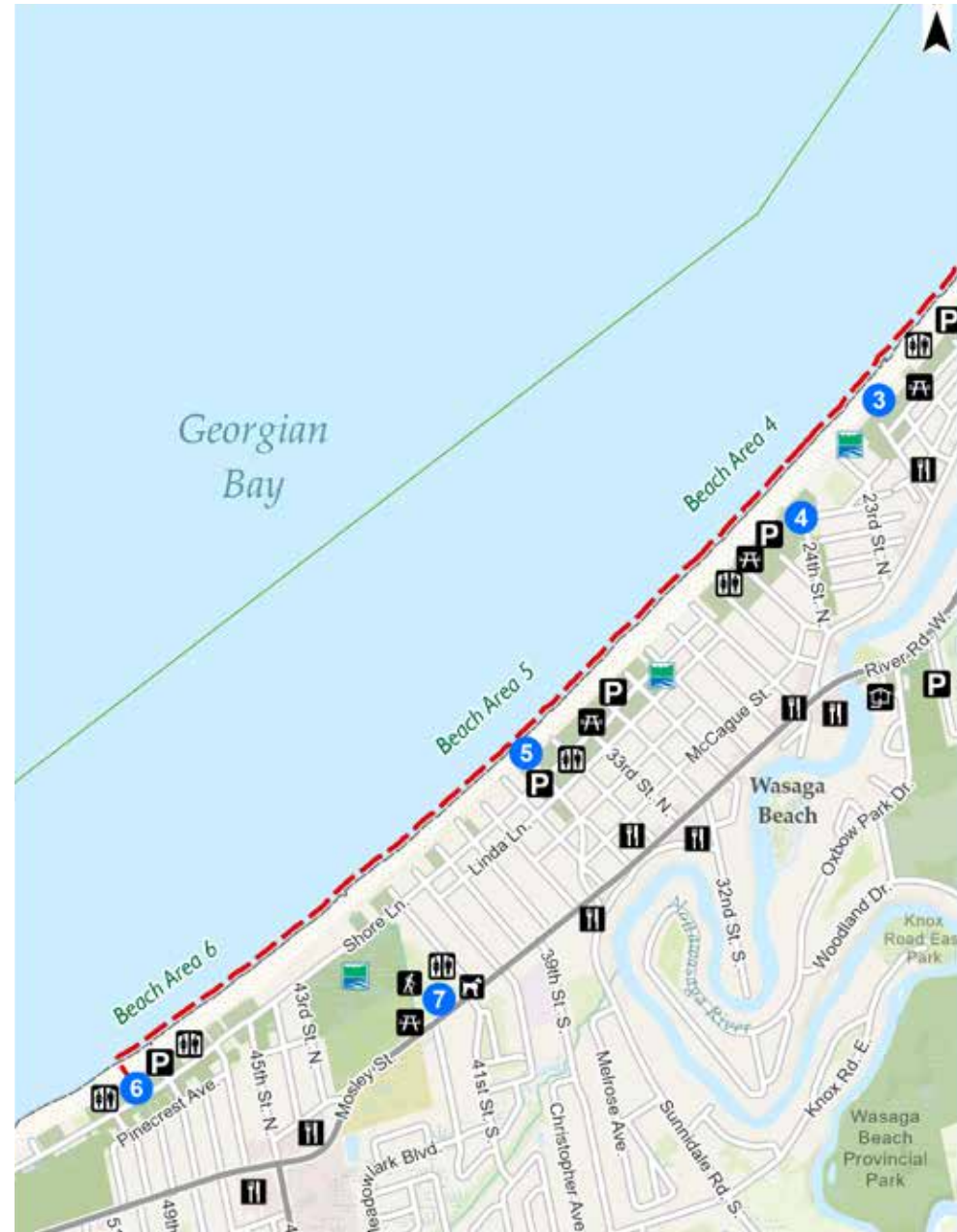
OUTFITTERS

Free Spirit Tours
28 Sunset Court
Wasaga Beach
705-606-0867

Beach Areas 4–6 offer a quieter, nature-focused experience. Area 4 is shaded by old-growth trees and popular with families and cottagers. Between Areas 4 and 5, the beach supports abundant wildlife, including deer and over 230 bird species. Beach Area 5 is known for environmental stewardship, with a sprawling picnic area shaded by towering Pine and Oak trees. Further west, Beach Area 6—once known as Brock’s Beach—offers a wind-sport launch via the Ontario Kiteboarding Association, with access to dining and shopping at 45th Street and a direct link to the Carley Patterson Memorial Trail and the town-wide cycling network.

Note: all Ontario Parks – Wasaga Beach Provincial Park facilities are operated seasonally.

The wind and weather can dramatically change the ability level of this route. Please check the weather conditions before heading out. Always stay within your paddling ability.



FISHING

Simcoe County boasts outstanding fishing year-round. From the beautiful waters of Georgian Bay to the shorelines of Lake Simcoe and Couchiching, and all our rivers and streams in between, we have something for everyone from the beginners to the pros.

The Nottawasaga River, Mad River, Willow Creek, Minesing Wetlands, Jacks Lake, and Wasaga Beach at certain times of the year have migratory salmon and trout.

Don't have your own fishing tackle? No problem! Ontario Parks – Wasaga Beach Provincial Park participates in the TackleShare Program. Fishing rods, reels, and tackle boxes are ready to be borrowed for free...just like a library book! For more information about TackleShare, visit www.tackleshare.com.

For more information on fish species and fishing locations in Simcoe County, visit experience.simcoe.ca/fishing.

Fishing Permits:

Ontario Outdoors Card

<https://www.ontario.ca/page/fishing>

NVCA Fishing Permit

<https://www.nvca.on.ca/conservation-areas/fishing-permits/>

Essa Township Seasonal Fishing Access Pass

<https://www.essatownship.on.ca/play-explore/fishing/>

Fish Species:

Rainbow Trout, Steelhead, Brown, Brook Trout, Chinook Salmon, Smallmouth Bass, Largemouth Bass, Northern Pike, Muskellunge (Muskie), Walleye (Pickerel), Lake Trout, Splake, Lake Sturgeon, Brown Bullhead

CAMPING

Near Wasaga Beach Area 1

Holiday Park

236 Main Street,

Wasaga Beach

519-964-0375

www.rootsrv.ca/holiday-park

Gateway Camping

186 Main Street, Wasaga Beach

519-964-0375

www.rootsrv.ca/gateway

Near Wasaga Beach Area 6

Jell-E-Bean Campground

8681 Beachwood Road,

Wasaga Beach

705-429-5418

www.jelleebcncampground.wordpress.com

Near the Sports Park

Jacque's Landing

1873 Klondike Park Road,

Wasaga Beach

705-606-8929

PARKS AND PROVINCIAL PARKS

Edenvale Conservation Area

3920 Highway 26, Minesing | 705-728-4784

Found on the banks of the Nottawasaga River in the hamlet of Edenvale, this scenic conservation area offers visitors a place to rest, picnic, launch their small boat or drop a fishing line. The conservation area requires paid parking to access.

Wasaga Beach Sports Park

1888 Klondike Park Road, Wasaga Beach | 705-429-3321

Discover the Nottawasaga River as you paddle your way along its gentle winding path. The Canoe Launch is located on the West side of the Klondike Park Road Bridge on the North banks just behind the Sports Park Service Buildings. The Wasaga Beach Sports Park also offers amenities such as five full-size ball diamonds, four full-size soccer fields, six mini soccer fields, a fully accessible playground, six horseshoe pitches, driving range, washrooms, a food concession, meeting hall, and covered pavilion.

Wasaga Beach RecPlex and Oakview Woods

1724 Mosley Street, Wasaga Beach | 705-429-3321

The Wasaga Beach RecPlex is a Community Centre for everyone, young or old, big or small and home to Oakview Woods and a YMCA. Oakview Woods is equipped with two tennis courts with lighting, picnic area, gazebo and accessible play structure, and seasonal skateboard/BMX Park and dog parks.

Ontario Parks – Wasaga Beach Provincial Park

11-22nd St. North, Wasaga Beach

705-429-2516 | <https://www.ontarioparks.com/park/wasagabeach>

Wasaga Beach is not only the longest freshwater beach in the world with 14 kilometres of safe, sandy shore, but the sunsets there are breathtaking. Wasaga Beach Provincial Park is divided into eight Beach Areas that stretch along the Georgian Bay shoreline. Beach Areas 1-6 can be accessed off Mosley Street, Wasaga's main street. Allenwood and New Wasaga Beaches are located north of the mouth of the Nottawasaga River off River Road East. All Beach Areas have plenty of room for parking, sunbathing and picnicking. In addition, some areas have creative playgrounds, bicycle paths, and boardwalks.



NOTTAWASAGA VALLEY RESTORATION

The Nottawasaga River Restoration Program (NRRP), launched in 2018 by the Nottawasaga Valley Conservation Authority (NVCA) and Nottawasaga Futures – South Simcoe Streams Network, is a major initiative aimed at improving water quality and restoring fish habitats in the Upper Nottawasaga River and its tributaries. The program’s primary goals are to enhance the coldwater trout and salmon sport fishery and to rehabilitate 10 kilometres of degraded stream habitat. Restoration efforts include stabilizing eroding riverbanks, installing woody trout cover habitats, creating spawning channels, and planting thousands of native trees. These actions not only improve aquatic habitats but also contribute to flood and erosion control and the health of floodplain wetlands.



By 2022, the NRRP had restored 2 km of river habitat, planted over 5,000 trees, and installed 750 meters of livestock exclusion fencing to prevent streamside degradation. The program also expanded to tributaries like Pine River, Mad River, Sheldon Creek, and Black Ash Creek, where similar restoration techniques were applied. For example, the removal of the Petun Dam on Black Ash Creek significantly improved water temperatures and fish habitats. The NRRP relies heavily on community involvement, engaging volunteers, landowners, and local municipalities. Funding has come from various partners, including the Ontario Trillium Foundation, Bruce Power, and the Greenbelt Foundation, with over \$340,000 contributed to date. The NVCA continues to seek new partnerships and funding to complete the remaining 8 kilometres of restoration over the next decade.

INVASIVE SPECIES IN THE NOTTAWASAGA VALLEY WATERSHED

Invasive species pose a major threat to the Nottawasaga watershed, aggressively displacing native plants and animals. Spread by humans, animals, wind, and water, they thrive in disturbed habitats, outcompete native species, introduce disease, hybridize, and often lack natural predators—impacting ecosystems, the economy, and human health.

They affect forests, wetlands, rivers, and streams, with an estimated annual cost of nearly \$30 million in the Great Lakes basin. Within NVCA’s jurisdiction, Phragmites dominate wetlands, garlic mustard threatens hardwood forests, and even the white trillium is affected. Emerald ash borer is killing ash trees, zebra and quagga mussels disrupt Georgian Bay, and round goby has colonized shorelines and rivers.

Early detection and rapid response is essential for the control and/or eradication of invasive species in an area. If you find one of the invasive species shown below, please report the sighting to EDDmapS Ontario at www.eddmaps.org/ontario.



Common and Glossy Buckthorn



Dog-Strangling Vine



Emerald Ash Borer



Garlic Mustard



Giant Hogweed



Norway Maple



Phragmites



Rough Manna Grass



Round Goby



Rusty Crayfish



Wild Parsnip



Zebra and Quagga Mussel



STAY CONNECTED



Tourism
Simcoe County